



## Study Conduct

### Conducting the fieldwork - We can support in multiple ways!

We offer advice on specific methods for biological data collection. Our expert team of taxonomists based in Amsterdam works with a digital counting system to process arthropod samples.

#### Services we offer:

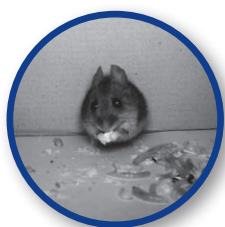
- Automated radio-tracking
- Arthropod determination
- Faeces analysis
- Plant material collection and determination
- Determination of residues in the environment
- Training of artificial intelligence for picture and sound classification
- General monitoring of birds, small mammals and bats
- Sampling schemes at both European and global scale

## Post field analysis

Our experts can either prepare the data or support your teams in the analysis stage. All data is analysed under GLP.

#### Services we offer:

- Statistical analysis
- Cleaning up the dataset
- Use of special software
- QGIS Analysis
- Report preparation



## Have a look at our work!



### Contacts

**Ralf Dittich**  
Team Leader Wildlife Services  
ralfdittich@eurofins.com  
+49 (0)151 2407 8535

### Eurofins Agroscience Services Group

easinfo@eurofins.com  
www.eurofins.com/agroscienceservices



One-stop service - world-class, worldwide

One-stop service - world-class, worldwide



## Wildlife Services

Eurofins Agroscience Services is here to support you!



eurofins

agroscience services

## Providing a full range of scientific wildlife services across Europe

**Our professional team of biologists at Eurofins I Mitox, part of the Eurofins Agrosience Services Group, offer support for scientific data collection and Good Laboratory Practice (GLP) documentation.**

Experienced in a wide range of service areas including field biology and wildlife, the team have formed working relationships with public institutions, farmers, private companies, agricultural advisors and universities throughout Europe.

**We support you every step of the way: from funding application to reporting, an efficient solution to add value to your project.**

### Funding

We support your application for funding through:

- Insights on state-of-the-art methods
- Power analysis to show that project aims can actually be reached
- Detailed and justified method descriptions
- Estimation of figures
- Sampling at European and global scale

### Preparation

#### Planning for the fieldwork!

We assist you in planning your project from the start, ordering materials (renting is also possible), preparing a detailed study protocol and through to training your teams. All documentation is prepared according to GLP testing standards.

#### Services we offer:

##### Training for students and staff

- Trapping, handling and tagging of birds and small mammals
- Reproduction monitoring of birds and small mammals
- Collection and storage of biological samples

- Manual and automated radio-telemetry of birds and small mammals
- Census methods of birds and small mammals
- Sampling of arthropods
- QGIS applied to fieldwork
- Planning and documentation of data collection according to GLP standards

#### Supply of scientific equipment

- Radio-tracking (manual and automated)
- Mammal traps
- Arthropod traps
- Camera traps
- Drones

#### Study planning

- Animal welfare applications
- (GLP) Study protocol
- Contacts within the Eurofins Agrosience Services network of labs for electronic study management (ESM)

Supported by the Eurofins network of laboratories, we also offer additional services such as genetic analysis and residue measurements.

